

HOWARTH LITCHFIELD

WINTER 2024 NEWSLETTER



VISUAL FOR NEW COLLEGE DURHAM SPORTS AND MUSIC BUILDING RENOVATIONS



DURHAM CASTLE & NORMAN CHAPEL



Directors - Elisa Berry, Neil Turner, Jonathan Yates (MD), David Pickersgill & Keith Handy

WELCOME TO THE DECEMBER EDITION OF OUR NEWSLETTER

Well, another year has gone by in a flash which is a great sign of how busy the practice has been through 2024. We are carrying that optimism through into 2025 with a range of projects and clients working on solutions, designs and strategies across the country.

We are busy across a wide spectrum of sectors and continue to support clients in their development plans. Our strength comes from being able to offer a multi-disciplinary design services across Architecture, Interior Design, Conservation, BIM, Design Project Management and Principal Designer (CDM and BSA).

The newsletter looks at the wide range of current projects on site and in development and those that we can publish. We have a number of a high-profile projects that are still under wraps, and we hope to publish details through the new year.

The practice has seen a number of heritage projects come to fruition including St George Church in Washington and Norman Chapel at Durham Castle. Further projects at Redcar Railway Station are on site and approvals obtained at Alnwick Station.

Educational projects are continuing to grow and are a large portion of our current workload. We are involved in a range of educational projects for both public and private sector clients, new build and refurbishment. They cover the full spectrum from Nursery School through to FE Colleges and Universities.

We have been developing many Industrial projects in the practice, across the country and look forward to sharing details in 2025 when they become public. Our specialist knowledge is being sought in this niche sector.

Our expertise in medical work has seen estate strategy work in London expanding along with medical projects in the south east as we work with trusts to assist in their development plans.

Our Building Surveyors are busy with Quinquennial Surveys for a number of Church denominations and Ministry of Justice Surveys. We are seeing great interest in the energy survey format that has been developed as we assist clients with carbon targets and sustainability aspirations.

We hope you enjoy the newsletter if you need any advice, please do not hesitate to get in contact with one of the Directors to discuss. Feel free to arrange to visit the studios.

NORMAN CHAPEL, DURHAM

Commissioned by Turner and Townsend, we started working on the Norman Chapel at Durham Castle in 2017, the works to conserve this building were completed earlier this year. The Norman Chapel is Grade I listed, originating around 1080 and is Durham's oldest standing building. It has been used for many things in its time from a place of religious worship, to a Royal Air Force post during the Second World War, and even a space for Theatre performances by students. Over the centuries the historic chapel's sandstone walls have suffered water damage from the surrounding soil as the chapel has become subterranean over time from the raising of the adjacent North Terrace of the castle. The Practice worked up a strategy in conjunction with Durham University's Estates and Buildings Department and alongside fellow design consultants to determine how best to ventilate and improve the external walls to the chapel, which were previously buried. An area of the Terrace adjacent to the chapel was locally excavated and a ventilation trench constructed to reduce the erosion of the stone, assist the drying out of the chapel walls and preserve the original features of the building. This will allow this beautiful building to stand long into the future and continue to be used and loved by many.



Norman Chapel, Durham

SOUTH LAMBETH ROAD PRACTICE, LONDON

We are delighted to have successfully handed over the refreshed and refurbished premises to South Lambeth Road Practice. Situated within a reinforced concrete structure, surrounded by residential properties above and alongside, the project presented unique challenges. However, through close collaboration with the practice, we are proud to have delivered an outcome that secures their place within the community for the next 25 years.

The works included a complete strip-out and the reinstatement of all services, finishes, furniture, and installations. These have been designed to meet modern standards for infection control and align with the ICB's commitment to digital enablement.



Reception Area



Clinical Room

NEW - HL DRONE SURVEY SERVICES

HL have recently invested in a drone to enhance our building surveying capabilities.

The drone allows our surveyors to safely and efficiently inspect hard-to-reach areas, such as roofs and chimneys, that would otherwise be inaccessible or difficult to assess from ground level. Equipped with a high-quality video feed, the drone enables real-time analysis on-site, while recorded images and footage provide a valuable resource for further review and detailed reporting back in the office.

This cutting-edge technology ensures that our building survey reports are thorough and accurate, identifying defects with precision while minimising costs and disruption. By eliminating the need for access equipment, such as cherry pickers, the drone not only saves time and money but also reduces the carbon footprint of our surveying activities.

With this investment, HL is committed to delivering professional, efficient, and environmentally responsible surveying services.



HL Drone Image

QUINQUENNIAL INSPECTIONS & ENERGY GUIDANCE FOR CHURCHES

This year has seen the Practice continue to undertake quinquennial inspections of a range of buildings for several denominations varying from Listed Churches to Church Halls and Manses. A quinquennial inspection conducted once every five years is essential in identifying immediate health and safety issues, helping keep building users safe, and helping to prevent further damage to the building from defects that may become more serious if not addressed therefore helping to save on expenditure in the long-term by identifying problems early on. The Practice uses aerial drone photography to inspect hard-to-reach areas, such as high roofs and church spires allowing us to identify issues that you normally wouldn't be able to see from a ground-level inspection. We have recently purchased our own office drone which will prove invaluable as we continue into next year's quinquennial inspections and beyond, in maintaining and preserving such buildings for future generations to come.

This past year has also seen the Practice develop our own energy guidance documents bespoke for each church in providing specific and tailored advice for the energy improvements that can be made in contributing to the Government's net zero carbon emission targets and helping to preserve our planet for the future. These guidance documents can be adapted for other types of buildings to churches which we look forward to developing and working on in the new year.



St James, Newcastle

HL SUPPORTS COUNTY DURHAM SCHOOLS EXPO 2024



Keith Handy and Liam Nellis participated in the County Durham Schools Expo 2024 at Durham County Cricket Club, where students—our future leaders—had the opportunity to connect with local businesses and organisations. They discussed their career aspirations and the educational pathways available to them.

Both Keith and Liam were pleased with the turnout and the enthusiasm displayed by the students.

Howarth Litchfield sees the value in events of this nature, in supporting the development of our industry for the future.

PROJECT UPDATES

SUGAR HILL PRIMARY SCHOOL, NEWTON AYCLIFFE

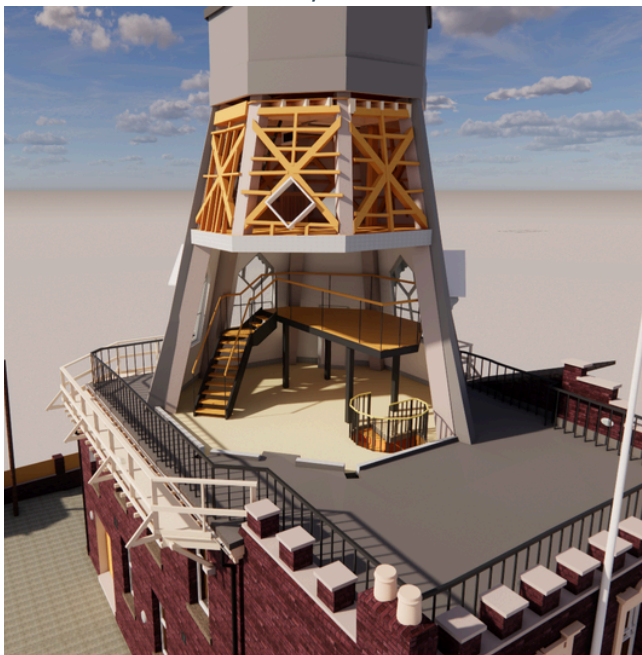
Good progress is being made on site for the new Primary School at Sugar Hill in Newton Aycliffe, a D&B project working with Tilbury Douglas Construction on the project for the DfE.

A single storey building on an existing site with a demolition phase to be completed after the new build is handed over in Spring 2025. The LGS structure by Tekbuild is now fully erected, roof works are ongoing and when complete will be a Bio-Solar roof with wildflower and PV panels with full maintenance access with 1100mm high parapet to perimeter. Externally windows are now being installed, with external brickwork started up to DPC level, with internal plasterboard beginning to be installed to areas that are watertight.



On Site at Sugar Hill Primary School

THE WINDMILL, NEWCASTLE UPON TYNE



Visual Impression

HL has had the privilege of working on this beautiful historic building through a series of renovations, adapting it for various uses, including a dentist's office and a family home. The building, known as Chimney Mill or Mill House, features a timber-clad structure that sits atop a traditional brick and mortar solid wall.

The current alterations and refurbishment work include:

- Replacing the existing timber cladding and adding wall insulation to improve thermal efficiency.
- Replacing the existing rooftop walkway with one that matches the original in style and materials.
- Creating a new mezzanine space within the windmill, providing access to the roof.
- Undertaking interior decoration of the windmill, which includes finishes and lighting updates.

BISHOP BEWICK CATHOLIC EDUCATION TRUST (BBCET)

HL are working through Thornton-Firkin for Bishop Bewick Catholic Education Trust (BBCET) on two redevelopment projects. Both projects aim to increase service provision to their existing and future students.

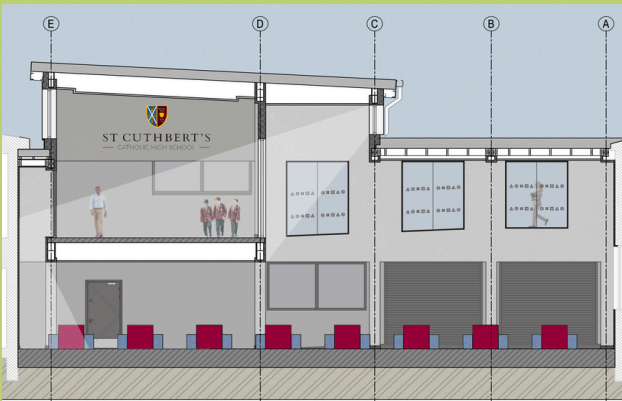
St Cuthbert's Catholic High School, Newcastle upon Tyne

This project is currently underway and aims to cover the school's existing 428 m² courtyard. This transformation will bring the external space indoors, enhancing dining and catering facilities for over 1,200 students, along with the addition of a mezzanine level.

The new catering area will complement the current dining space, allowing for a reconfiguration that includes two serving counters and improved options for students during lunchtime, such as a sandwich bar and a cold food counter.

The mezzanine level will create additional space on the first floor for an internal student area, as well as a quiet study zone that will provide access to first-floor classrooms.

The project team includes Thornton-Firkin, HL, Meldrum Construction, JC Consulting S&C, and Link M&E.



St Cuthbert's High School



Proposed Interior Images

St Benet Biscop Catholic Academy, Bedlington

At Benet Biscop Catholic Academy in Bedlington, a new project is underway to develop the school's Sixth Form Centre. The proposed design features an 810 m² two-storey building dedicated to tertiary education.

The new centre will be fully accessible, featuring a variety of environments conducive to learning and collaboration. Students will benefit from well-appointed teaching and IT spaces, comfortable staff offices, and a dedicated library/careers room. Essential amenities such as toilet facilities and storage areas are included to support the overall experience.

The design includes a vibrant common room, providing students with a welcoming space to relax and socialise. In addition, a café will offer a convenient option for refreshments, while a designated study area will support focused academic pursuits.

The project team includes Thornton-Firkin, HL, Brims Construction, JC Consulting S&C, and Link M&E.

MAWBEY GROUP PRACTICE, LONDON



We are delighted to have started on site at Mawbey Brough Health Centre to increase the clinical capacity on behalf of the practice and Guy's and St Thomas' NHS Foundation Trust.

Works are being delivered by ReGen Construction and is progressing well – on time and looking good. Phase 1 is due to handover early in the new year with 2 further phases taking the project to completion in the summer.

NEW COLLEGE DURHAM, SPORT AND MUSIC BUILDING

Planning approval has been granted for a £5m re-development of the Music & Sports building forming part of the wider New College campus in Durham City. This follows the recently completed 'T.H.E Hub' extension where HL were the Interior Designers on the project.

The proposal for the current Music and Sports building responds to the recent approval of a new external artificial grass (AGP) to the south of the existing sports building. The proposal is to enhance both student and visitor experience to both internal and external visitors of the college. Designs have been led by the relocation of the café to the first floor allowing it to overlook the new pitch and repositioning the gym within a new enhanced offer at ground floor on the south facing public fronting side of the building.

In addition to enhancing the current sports curriculum offer, the proposals also aim to deliver further enhancement to the A level curriculum with additional classroom spaces. In order to achieve this, we have proposed a new second floor extension that wraps around and matches the height of the existing sports hall.

Significant enhancements and functionality of the main entrance are proposed with the inclusion of a 'projecting' lobby to capture the natural flow of people into the building, and to continue the aesthetic language of T.H.E.Hub for continuity.



NEW PROJECTS

THE TOWNHOUSE, COLCHESTER



We are excited to embark on a new collaboration with ReGen Construction in the reimagining of The Townhouse on behalf of the Essex Youth Service (EYS). The centre supports young people in Colchester as they 'navigate school, work, and life' by offering a range of valuable skills and experiences.

EYS has successfully secured funding to refurbish their premises, enhancing the experience for the young people of Colchester and we look forward to sharing regular updates as the project progresses into the new year.

DISCOVERY MUSEUM, NEWCASTLE

We are looking forward to 2025 and working with Newcastle City Council on a newly won project as their Lead Designer and Consultant for the re-roofing and external fabric repairs (RIBA Stages 4-7) to the iconic Victorian Discovery Museum in Newcastle City Centre. Working with us on this project will be Todd Milburn - Quantity Surveyors, and Adelphi - Specialist Conservation Engineers.



STAFF RECRUITMENT

WE ARE HIRING

We are looking to add to our great team so if you are an ambitious and talented Architect, Technologist, Interiors or Building Surveyor and looking to progress your career get in touch.

Email your CV and portfolio to hlp@hlpuk.com or telephone us direct on 0191 3849470.

AND FINALLY FROM ALL OF US.....



CONTACT US

If you would like to know more about any of the projects featured in this edition or think any of our services may be of help please contact us.

Telephone: 0191 3849470 // Email: hlp@hlpuk.com