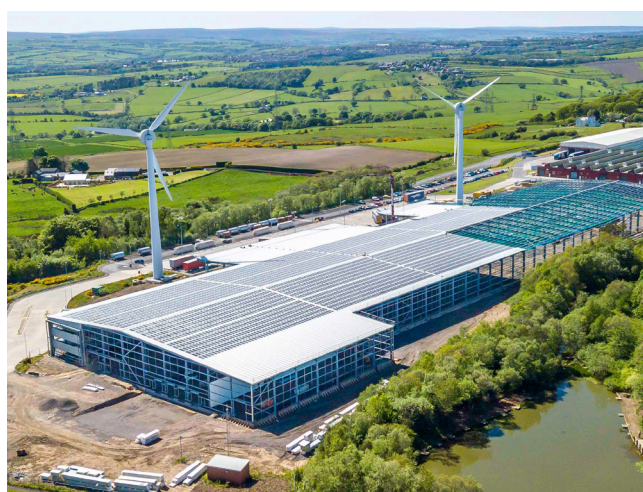


AUTUMN 2022

LIDDON HOUSE, DURHAM, DH1 1TW

NEWSLETTER



INTRODUCTION

A MESSAGE FROM THE DIRECTORS



Directors - Elisa Berry, Neil Turner, Jonathan Yates (MD), David Pickersgill & Keith Handy

Welcome to the October edition of our newsletter.

We complete our newsletter in times of many, varying, world events occurring and consider the potential impact of this to the construction industry. Energy use and the cost increases has become a huge issue politically and socially. HL have long advised clients to consider energy use in their designs for both fabric improvements to existing buildings and to create zero carbon building for new designs.

We are investing in our studio with thermal improvements and the next stages of our Sustainability Plan by self-generating a quarter of power of the building through roof mounted solar energy. Its easy to advise - so we are leading by example.

The year has been very busy in the studio, and we have seen a huge variety in commissions across multiple sectors for the practice for existing and new clients.

The newsletter looks at current projects in the various stages of development and some recent new commissions that we have won during the last 6 months. We are busy across a wide spectrum of sectors and continue to support clients in their development plans. Our strength comes from being able to offer multi-disciplinary design services across Architecture, Interior Design, Conservation, BIM, Design Project Management and Building Surveying.

The newsletter demonstrates this range from Churches, schools, conservation projects, Theatres, medical and community buildings; to our increasing presence in the green industrial projects with Sunderland Council at Parsons, exciting capital projects that seek to make these local authorities at the fore front in the use of green technologies. We also include a number of industrial projects in the newsletter.

We have completed school Projects for the private school sector Dame Allan's and Barnard Castle along with new build state schools at The Discovery School, Middlesbrough and Eggescliffe School, Stockton-on-Tees.

Our expertise in medical work has seen estate strategy work in London expanding with new facilities opened in Crown Dale GP Centre, Kidbrooke Health & Wellbeing Centre & Dentist and Nine Elms Surgeries, alongside refurbishment medical facilities in West Yorkshire, with exciting new proposals in other areas – still under wraps so not in this newsletter yet.

Our building surveyors are busy with Quinquennial surveys for the United Reformed Church and Ministry of Justice surveys.

We hope you enjoy the newsletter. If you need any advice, please do not hesitate to get in contact with one of the Directors to discuss. Feel free to arrange to come across for a coffee.

DISCOVERY SCHOOL

HL have been working with Tilbury Douglas and the Department for Education (DfE) on the delivery of their new Discovery Special Academy (DSA) project in Middlesbrough. The school caters for pupils aged between 4-11 with severe learning difficulties, including those with a physical disability, multi-sensory impairments and complex medical problems.

The DSA were pleased to welcome their first pupils to the specially constructed, state-of-the-art facility this September. Its design centres around an internal courtyard to encourage independence among children and provide a flexible, safe and welcoming environment. Classrooms are located around the courtyard with each having direct access to the external play area.

The building itself includes an administration suite, Early Years and KS1 Teaching Suite, KS2 Teaching Suite, Therapy Suite, Main Hall and Services Suite. There are two reception and nine primary classrooms and in each teaching suite two small group rooms are provided to facilitate subject-specific learning for smaller groups and 1:1 teaching.

The internal and external spaces and approaches can be used safely, easily and with dignity by all, regardless of disability and impairment with entrances to the building, including the main entrance, convenient and welcoming with no disabling barriers.



Discovery Special Academy Visuals



Discovery Special Academy Visuals

PARSONS DEPOT, SUNDERLAND

HL are delighted with the completion of the Parsons Depot Design and Build project. This provides Sunderland City Council with a 3900m² shared multi-purpose vehicle depot, allowing them to rationalise the Council's existing workshop functions, commercial fleet and service provision, through co-location at the site.

The co-located services include Fleet Management, Highways Operations, Environmental Services, Arbor Team, Horticulture Services, an Authorised Testing Facility and MOT testing area. Included within the office areas are large meeting spaces and training room, with full locker/shower facilities and staff mess room with an area for possible future expansion.

The depot will provide the flexibility to accommodate and adapt to changing vehicle types and will also provide an Electric Vehicle Hub, for the Council's short and long term plans to increase the numbers of electric vehicles within its fleet.

The site will also benefit from renewable energy / low carbon solutions including a large amount of solar photovoltaic panels on the south facing roof with a battery energy storage system which will capture the energy produced by the solar panels, limiting the electricity required from the grid and will be used to charge the electric vehicles. Other measures include building fabric u-values that better current Building Regulation standards, high efficiency condensing boilers, ventilation heat recovery / extract ventilation, maximisation of natural daylight within the Workshop and high efficiency lighting.



Parsons Depot, Sunderland

STOCKTON BOROUGH COUNCIL ARCHITECTURAL SERVICES FRAMEWORK PROJECTS



Eggescliffe School, Stockton on Tees

HL is delighted to be supporting Stockton Borough Council to deliver a number of exciting projects under their framework agreement for Architectural, Interior Design and Building Surveying Services:

- New teaching block, Eggescliffe School & Sixth Form College
- All Saints CoE Academy classroom extension (General, science & drama)
- Former Glam night club and post office site
- Stockton & Yarm Town Hall alteration and refurbishments
- Supporting SBC on Heat decarbonisation strategy across the borough
- Decarbonisation and sustainability strategy for SBC's proposed head office at Dunedin House
- Remodelling & Extensions, Bishopton Centre PRU, Billingham
- Norton Road rear modifications

With other exciting schemes in their early stages.....

PROJECT UPDATES

GREENCROFT BOTTLING, CO DURHAM

HL has been working with Greencroft Bottling in the design and build of its new 22,000m² wine bottling facility, named Greencroft Two. The new £20million building will more than double the potential capacity at Greencroft Bottling to 400million litres per year, which is equivalent to around a quarter (28%) of all wine sold in the UK.

When complete, Greencroft Two could accommodate up to 10 bottling lines and seven ancillary lines for bag-in-box, cans, pouches, key kegs or any new types of sustainable packaging. The first of Greencroft Two's new lines will be operational by Spring 2023. The building also incorporates 3,000m² of divisible office space over 3 floors.

In line with the sustainability philosophy of the company, Greencroft Two will become the UK's most sustainable wine bottling facility, powered by renewable wind and solar power. When Greencroft Two is complete, it is estimated that, overall (new solar and existing on-site wind turbines combined), the business will generate over 7 million Kilowatt hours per year of clean, renewable energy. Together, these are sufficient to power the facility, making it the first facility of this size not beholden to the National Grid.



Construction - July 2022

NEWCASTLE FOOTBALL HUBS

HL are working with Newcastle City Council and Robertson Construction in the delivery of their new Bullocksteads & Blakelaw Football Hubs (formerly Parklife Football Hubs). These Hubs are part of the Government's Sporting Future Strategy which looks to focus beyond sport participation and harness it as a route to changing people's lives for the better.

HL have been providing Lead Designer, Architecture and Principal Designer services delivering two storey facilities for each site which includes communal and officials changing rooms with Reception, Café, Community Room and support spaces. Both hubs will include a private Health and Fitness Suite along with changing rooms plus a Community Studio at the Bullocksteads site.

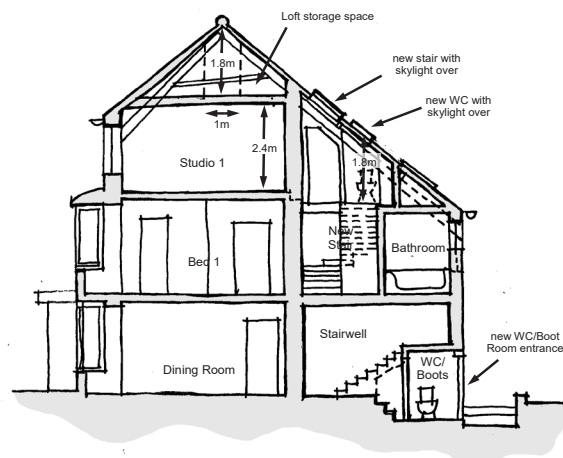
The new hubs will also provide enhanced football and community facilities, including all-weather playing surfaces. The new Health and Fitness facilities will also aim to increase leisure activities and participation of the local population.

This project is due for completion early 2023.



Football Hub Blakelaw
Image Provided by Fairhurst

PRIVATE RESIDENCE, EASINGTON



HL are currently working with private clients in the refurbishment of their Grade II listed manor house in Easington Village.

The projects refurbishment plans include a range of internal and external alterations aiming to sympathetically enhance and protect the building for its future use as a modern home.

Internally floor layouts on ground level will remain largely unaltered barring the modernisation of an existing kitchen extension. First and second floor layouts and alterations will look to remove later modern fabric and reinstate historic access between floors lost/altered over time. This will enable use of long forgotten spaces on the upper floor via a new landing plus additional WC and bedroom/study spaces.

External refurbishments will include, lighting, roofs, guttering and windows. These will all be refurbished or replaced using traditional materials/methods.

MEDICAL

Medical work across the practice continues and across the country. Recent work includes a number of NHS Clinical Commissioning Groups - Lambeth, South East London, North Central London and North West London which includes Strategic Estates Planning as well as building and design work at Crown Dale GP Centre, Kidbrooke Health & Wellbeing Centre & Dentist and Nine Elms Surgeries.

Medical facilities have been upgraded in Bradford for Bevan Healthcare, and HL have a number of healthcare projects in the pipeline. These complex projects can often take time so we hope to share images of some of the existing new proposals in future issues.



Kidbrooke Health and Wellbeing

ALUMNO STUDENT ACCOMMODATION, LEEDS

Works are now progressing at Alumno Group's £30million, 411 bed student accommodation project at Whitelock Street, Leeds. The concrete frame continues to progress with a projected topping out date of January 2023, with two tower cranes now on site, brickwork which commenced on site. Stair cores are leading the way, with pre-fitted balustrading going in with the stairs. The show flat on the ground floor is also about to start with windows imminantly which will create an early show flat marketing suite within the building. One year to go and counting."



Alumno Leeds Site Photograph



Drawing of Smelt House Plus Proposed Extension

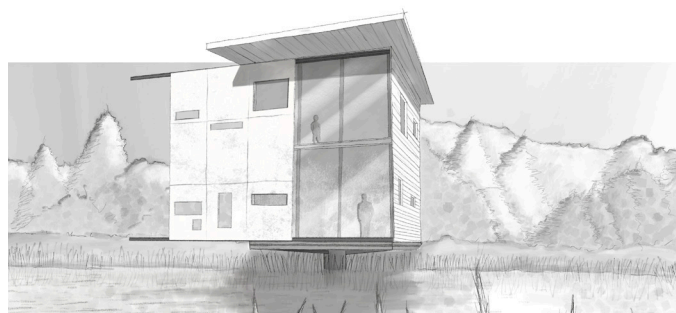
SMELT HOUSE, CROOK

Victorian Grade II Listed House - HL have been developing a scheme for private clients which includes internal alterations, restoration of the east elevation as well as a modern glazed extension. Planning and listed building consent obtained for works to the east elevation included re-introducing windows into the existing bricked up arches. The modern glazed extension, connected via a glazed link, sympathetically links the old and the new and creates a modern lightweight space, contrasting the robust nature of the original building.

NEW PROJECTS

DURHAM WILDLIFE TRUST

HL have been assisting Durham Wildlife Trust on designs for their planned new bird hide at the Low Barns nature reserve near Witton le Wear. The Trust is now seeking funding and donations for this venture. If you are interested in supporting them and want to know more please contact Jim Cokill, Trust Director on 0191 5843112 or at jcokill@durhamwt.co.uk.



Hide Visual

PLANNING APPROVAL SUBMITTED



Redcar Central Station Visual

REDCAR CENTRAL STATION

HL can now disclose that Redcar and Cleveland Council's plans for the restoration and upgrade of their Grade II listed Redcar Central Station have now been submitted for planning approval.

Plans will see the creation of a welcoming environment for travellers to the town as well as providing commercial and retail spaces. The building will also incorporate efficient sustainable systems which include solar panels, fabric insulation and new weatherproofing.

ARCHITECTURAL AWARDS

HL are delighted to announce that since our last newsletter two of our North East projects, Neville Hall and The Fire Station have both received multiple regional and national awards.

NEVILLE HALL, NEWCASTLE

This project saw the restoration and refurbishment of the Grade II* Listed Victorian building into a centre for the development of young engineers for the Common Room of the North.

The project delivered two elements, the completion of specialist repairs and the sympathetic upgrade of the building's facilities through the inclusion of a central core within the original buildings open core which allowed for stairs, a lift, toilets and extension through the roof for the creation of a modern glass fronted office contrasting with the traditional stone and slate building.

This project has been awarded:

- Winner - Newcastle Lord Mayor's Design Award for Conservation (2021)
- Winner - RICS UK Refurbishment/Revitalisation Award (2022)
- Highly Commended - Civic Trust AABC Conservation Awards (2022)
- Shortlisted - RTPI NE Planning Excellence Award (2021)
- Shortlisted - RICS UK Community Benefit and Heritage Project Awards (2022)



THE FIRE STATION, SUNDERLAND

The overall project involved the building of a new 500 seat auditorium along with the refurbishment of the Edwardian Fire Station.

Located in the heart of Sunderland and surrounded by listed buildings this new venue accommodates a performing arts centre for theatre, dance and music, which accommodates cinema, lectures and conferences, with flexible spaces and an extensive food and refreshment services which operate independently and outside of performance times.

This project has been awarded:

- Winner - Insider NE Property Public-Private Collaboration (2022)
- Winner - Schuco Excellence Cultural Building Award (2022)
- Winner - National Structural Steel Design Award (2022)

