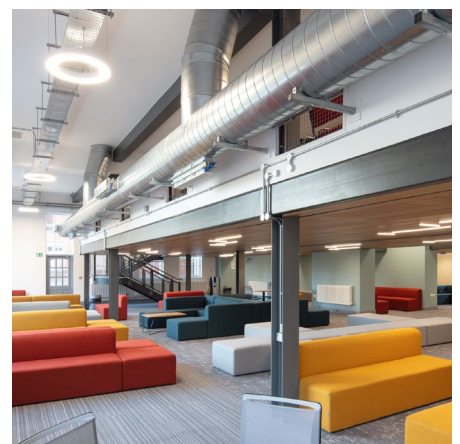
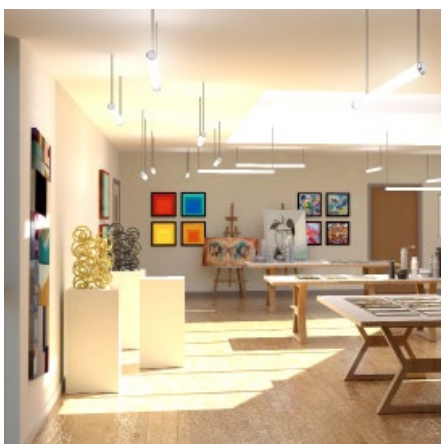

LIDDON HOUSE, DURHAM, DH1 1TW

NEWSLETTER



INTRODUCTION

A MESSAGE FROM THE DIRECTORS



Directors - Jonathan Yates (MD), Elisa Berry, Keith Handy, Neil Turner & David Pickersgill

Welcome to the latest edition of our newsletter. We cannot ignore the current world issues going on, but we can be positive and optimistic in our outlook for the future.

We would firstly like to offer our gratitude and thanks to all staff in the NHS, at both Primary and secondary care alongside key workers for their efforts over the last few weeks in the pandemic.

The newsletter looks at current projects in the various stages of development and some recent new commissions that we have won during the last 7 weeks. We are busy across a wide spectrum of sectors and continue to support clients in their development plans. Our strength comes from being able to offer multi-disciplinary design services across Architecture, Interior Design, Conservation, Building Surveying, BIM and Design Project Management.

The newsletter demonstrates this range; from a fantastic new student accommodation in Leeds for Alumno to the latest school win with Interserve in Middlesbrough, following the previous success with the Mo Mowlam Academy school in Redcar. Medical Centres in London, sensitive conservation projects, large housing schemes through to innovative one-off homes; the practice is alive and well and continuing to thrive and win significant commissions.

We have successfully had all the team working remotely and through various formats of video

link conferencing we have been able to provide a continuous and full service to our clients across all sectors.

Looking forward, the Covid-19 pandemic will have some lasting implications for the design of buildings and the way we work and live. At HL we are reviewing everything from our own studio space to the advice and support we can offer all our clients. Our own building can be adjusted easily to allow safe working alongside the flexible working that we already operate.

New designs may have to accommodate social distancing and alternative working methods and our Interior Design team is already looking at the implications with materials, layouts, welfare and circulation. If you need this specialist help, please call and we can help assess your facilities.

The last six months have seen growth in the practice across a fascinating spectrum of projects and we hope that this will continue over the next year. The leaflet represents a snapshot of work and many more projects are being developed with our clients to support their vision and design ambition.

So, it is business as usual at Howarth Litchfield and if you need any advice please do not hesitate to get in contact with one of the Directors to discuss.

MO MOWLAM ACADEMY, REDCAR

Following Interserve's appointment as main contractor for the new Mo Mowlam Academy in Redcar HL have been engaged as part of their team to provide lead design, architectural interior design and principal design services. The Academy which is part of the Horizons Specialist Academy Trust will provide specialist educational provision to 30 primary and 70 secondary pupils who have social, emotional and mental health needs. This will be the first of its kind in Redcar.

The school's design creates two distinctly separate teaching spaces for primary and secondary pupils. Pupils will have access to a multitude of internal and external learning experiences, that will engage and develop confident individuals who are positive about who they are and what they can achieve, creating successful, enthusiastic and motivated learners.



Mo Mowlam Academy - Ground Works - Courtesy of Interserve

ST GEORGE'S ANGLICAN CHURCH, FATFIELD

HL have been awarded another Church project and will be working with St George's Anglican Church in Fatfield to create their new space for church ministry in the 21st century. This project will see the design and construction of a single storey extension incorporating a new entrance, function room and by design improve accessibility to the church.

The proposed extension will contrast with the existing building and feature large areas of glass. Its design will also support one of the church's aims of becoming energy efficient and ecologically friendly through the incorporation of sustainable technology throughout to reduce the buildings energy consumption.



St George's Anglican Church - 3D Image

FOLD HOUSE, NORTHUMBERLAND

HL have enjoyed working with the client to develop a House under the paragraph 79 planning legislation. The design has taken the form of a Northumberland Farmhouse and modern metal barns to create an inspirational design. The scheme has also taken full advantage of the latest environmental innovation methods, one of which is the storage of heat in the ground through an earth bank which will then be displaced back through the house. This design will set new standards of energy efficiency and self-generation and allow the effortless incorporation of the latest technologies which seek to push the boundaries of knowledge.



Fold House - 3D Model

LEEDS - ALUMNO

We are delighted to be collaborating with Alumno once more, delivering an exciting mixed-use regeneration scheme to provide Purpose Built Student Accommodation (PBSA). These will come in a range of affordable formats and provide excellent communal facilities including internal and external social and fitness spaces, student hubs, laundry, private dining and study areas.

The low ecological value and visual amenity of the site will

be greatly enhanced with landscaped courts, tree planting and roof terrace with southern views to the city.

The design is the result of extensive consultation with Leeds City Council and other stakeholders including East Street Arts and The Henry Moore Foundation. Artist students will also be involved by creating an active street frontage to the ground floor.



Leeds Alumno - Artists Impression

NORTH WOOD MEDICAL GROUP @ CROWN DALE

We are delighted to have submitted the planning application for the extension proposals at the Crown Dale practice.

HL have been working with the practice and Lambeth CCG since the beginning of 2020 to design the extension and remodelling proposals to provide an additional 4 no consulting rooms and supporting accommodation.

The proposals are an exciting addition to the premises and are a tribute to the successful working relationship between the design and client teams.

The extension incorporate many sustainable elements such as PVs and 2 living walls , the latter also making a positive

contribution to the practices social prescribing abilities.

The project is well on its way to achieving a BREEAM rating of Very Good and ha had a very successful DQI mid-review.

HL are now working with the design team – Identity Consult, Fairhurst & JHPartners, to finalise the tender information which will be issued in May 2020.

We are looking forward to the next chapter in the development of the project and seeing the project start on site later this year.



Proposed South East Elevation (front)

DAME ALLEN'S SCHOOL, NEWCASTLE

We are very excited to be the first application to be determined via a 'Virtual Committee' by Newcastle City Council this month. With these current uncertain times it is excellent to see the Council putting alternative measures in place to allow business to progress. This means that, despite the pandemic and severe disruption to 'business as normal', the application will be determined within normal timescale, as testament to the diversification and resilience of the council and the design team.

The proposals are an exciting additional to the facilities at Dame Allan's Schools, providing a new Arts Centre, Science Labs, Sports facilities and general teaching spaces. The design incorporates a living wall to the main elevation to complement the landscaped streetscape.



Dame Allens - 3D Image

ONGOING PROJECTS

NEVILLE HALL, NEWCASTLE

HL are delighted that the conversion works have recommenced at their Neville Hall Project in Newcastle, with Brims Construction back on site. Neville Hall which is a Grade II* listed building and situated on Westgate Road in Newcastle and was built in 1869 – 1872. The current project for the Common Room of the North using Heritage Lottery Funding, will see this historic building become a centre for careers in Engineering. The project has both new build elements and the complete overhaul and restoration of this fabulous building. When finished the building will have conference, bar, office and lecture and library facilities. HL interiors have been working with the client Liz Mayes to create the right ambience to go with the educational ethos of the building.



Neville Hall - Internal Works



RGS - Agora

- Jill Tait Photography

COMPLETED PROJECTS

ROYAL GRAMMAR SCHOOL - LIBRARY

In our last newsletter we featured an article on our Royal Grammar School Library project which saw the completion of the external works, by Robertson's and continuing work on the interior spaces.

The interior spaces are now complete and HL would like to update you on how the fabulous suite of art rooms, new library and Agora lecture area turned out in the latest phase in the school's masterplan.

HOME OFFICE

Working from home has really got us thinking about our ideal home office space. Adjusting to a new working environment can be a challenge, particularly when we are so used to the space, equipment and environment of our busy offices. As we look positively to the future, we may start to see a shift in new ways of working. We have decided to pull together some of our favourite looks and what we find important when creating a home office space:

- When decorating your home office, it's worth considering the materials used to make the things you're bringing in. It's safe to say that the less processed something is, the better it is for you and the environment. Not only this but natural materials typically last longer, are more neutral in design and are easy to maintain or recycle if you ever want a change in style.
- Neutral and calming colours help to focus the mind and create a healthy atmosphere for working.
- Plants! It's a proven fact plants can help boost productivity, creativity and reduce stress and anxiety.



- Natural light and ventilation play a huge part in your mental and physical well-being. Try and incorporate this into your new working environment wherever possible.



Redhills - Exhibition/Conference/Meeting Facilities Impression

REDHILLS, DURHAM

HL are currently working with the Durham Miners Association on their plans and ideas to renovate and extend their Grade II listed Miners Hall, Redhills in Durham. This project has recently secured Heritage Lottery Funding and will see the reimaging of the building, which was built over 100 years ago. A new extension is intended to the side of the grade 2 listed building to allow for new exhibition, conference and meeting facilities. These facilities will complement the existing building and support the storage of the Associations historic Miners' Banners. We are looking forward to developing the schemes to take this fabulous project forward.

SUNDERLAND MAC THEATRE

Work re commencing on the Sunderland MAC theatre, the steel frame taking shape with Brims making good progress. The New theatre has HL as the Design build Architects for the contractor with Flanagan Lawrence as concept Architects



Sunderland MAC Theatre Image
Courtesy of Flanagan Lawrence

NEW CONTRACTS

Over the last few weeks during the lockdown we have secured a number of new projects and wins in competitive bids. Watch for new announcements shortly on our website www.howarthlitchfield.com. We are very excited and can't wait to get started.